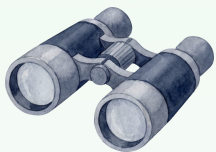





# SPOT SOMETHING Wild IN CARLETON PLACE



Grab your binoculars and see what birdwatching adventure awaits!



**YOUR ADVENTURE  
Starts Here!**

Made possible by:



TD Friends of the  
Environment  
Foundation

## HOW TO GET STARTED

1. Bring a pair of binoculars from home or lend a pair at the Information Centre at 170 Bridge St.
2. Find a trail you'll love - check out the map on the back or check ebird.org.
3. Go at dawn and enjoy the peaceful sounds of songbirds and 200+ migratory species!

## BIRDERS' CODE

- The comfort and welfare of the birds always comes first.
- Habitats must be protected and respected.
- Keep noise disturbance to a minimum.
- When you find a rare bird, think carefully about who you tell.
- Abide by bird protection laws and guidelines.
- Respect the rights of landowners.

## WHAT YOU MIGHT SEE



Downy Woodpecker



Osprey



Great Horned Owl



Hooded Merganser



Trumpeter Swan



Yellow Warbler



Blue Jay



Redwing Blackbird



Snap a pic & share your sightings!

## WHERE TO WATCH

Can you check them all off?



### Anthony Curro Park

- 📍 Stonewater Bay
  - Cross the bridge and turn right onto Townline Rd, then right onto McNeely Rd. Turn left onto Stonewater Bay.

#### What to look for

Bluebirds • Swallows • Vireo • Woodpeckers • Waterbirds • Shorebirds

### Carleton Place Riverwalk Trail

- 📍 Princess St., along the waterfront
  - Head down Mill St. You can enter the trail directly from Princess St., or park at the arena (75 Neelin St.) and access the trail to the side of the parking lot.

#### What to look for

Ducks • Swans • Loons • Warblers • Finches

### Centennial Park | O-Kee-Lee Trail

- 📍 Flora or Joseph St., east of downtown
  - Cross the bridge, left on High St., left on Flora St. The park is accessible to the right.

#### What to look for

Bufflehead • Wood Ducks • Kingfishers • Cardinals • Cormorants • Cooper's Hawk

### Riverside Park | Riverside Trail

- 📍 Lake Ave. West, along the river
  - Head down Bridge St. away from the bridge, turn right onto Lake Ave. W. The park is to your right.

#### What to look for

Ducks • Starlings • Waxwings • Cardinals • Geese • Grackles • Hawks

### Roy Brown Park | Trail & Boat Launch

- 📍 Lake Ave. West, by the boat launch
  - Go down Bridge St., turn right onto Lake Ave. W. Park is located where the road turns into Boundary Rd. Park your car at the designated lot to the right on Lake Ave.

#### What to look for:

Hooded Merganser • Goldeneye • Swans • Loons • Warblers • Woodpeckers



# CARLETON PLACE

## WHERE TO WATCH - BONUS

### Beckwith Park | Goodwood Marsh Trail

- 📍 Off Hwy 7, west of Carleton Place
  - Head west from Bridge St., continue onto Hwy. 15, then turn left onto Beckwith 9<sup>th</sup> Line. Turn right onto Beckwith Pk. Ln. and park by the arena.

**What to look for**  
 Finches • Grosbeaks • Herons • Sparrows • Woodpeckers • Osprey

### Try Indoor Birdwatching at Parrot Partners

- 📍 Industrial Ave. (just a few minutes past the bridge)
  - Head west on Bridge St., continue onto Hwy 7, turn onto Townline Rd.

**What to look for**  
 Parrots • Macaws • Cockatoos • Conures • African Greys

### LEGEND

- Information Centre
- Park
- Walking Trail
- Indoor Sanctuary
- Off the Map



## MAKE A DAY OF IT

- Coffee + baked goods on Bridge St.
- Browse local shops downtown
- Sunset picnics by the Mississippi

For trails, guides, events, & more:

[VISITCARLETONPLACE.CA](http://VISITCARLETONPLACE.CA)

